

MANU

Element sofa



Flexible in design *bold in appearance*

With its generous proportions, deep seating, clean lines, and bold piping, Manu is the heart of your interior. Whether you choose a spacious corner sofa or a cozy three-seater, Manu always fits. This element sofa, entirely designed by our own team, exudes a strong, stylish, and thoughtfully crafted character. Your living style, your configuration, your moment of relaxation.

As the first premium sofa in our collection, Manu is available in an extensive range of fabrics and colors, allowing you to tailor it perfectly to your home. From warm, calming shades to striking colors and rich textures, every choice gives the sofa its own unique character.



BOBARE
01 | Teddy anthracite



Discover where to
shop Manu – just
scan the QR code!

JARRA
79 | Velvet anthracite



Thanks to its modular design, you can easily change the configuration and size. The clean lines and bold shapes create a harmonious and inviting look, while the pronounced piping adds depth and a distinctive character. The result is a sofa that is both flexible and makes a strong presence in any space. Manu lets your style shine.

With focus on sustainability

The Manu carries the FSC®-label. The international FSC®-label guarantees that the raw materials used in wooden products (or products containing wood) come from responsibly managed forests.



The mark of
responsible forestry

Fabric group 1

TECO



107 | Velvet warm grey



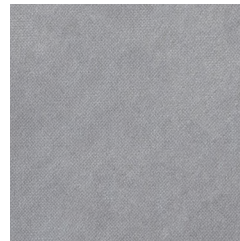
402 | Velvet
golden yellow



506 | Velvet green



801 | Velvet anthracite



805 | Velvet grey



807 | Velvet nougat

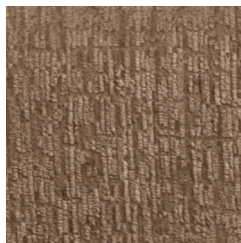


904 | Velvet sand

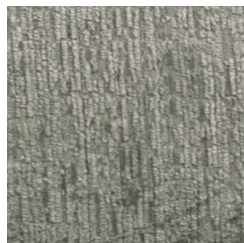
FERRA



14 | Structure velvet
bonsai



127 | Structure velvet
brass



206 | Structure velvet
frost

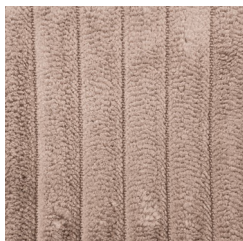


108 | Structure velvet
mountain



109 | Structure velvet
wheatfield

RONNI



12 | Rib sand



13 | Rib taupe



83 | Rib grey/brown



94 | Rib terra



96 | Rib mocca brown

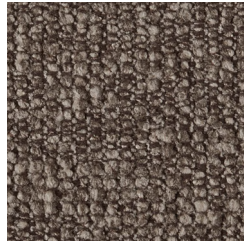
LIORA



110 | Bouclé ecru



05 | Bouclé beige



176 | Bouclé brown

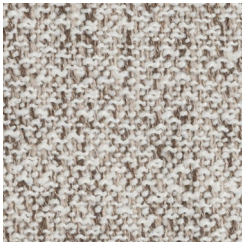


216 | Bouclé yellow/
brown

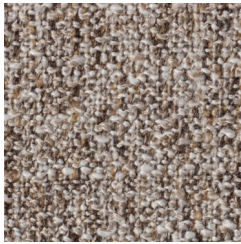


96 | Bouclé rust brown

ORARI



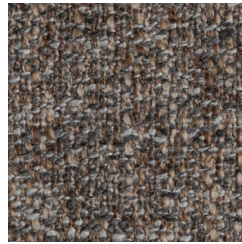
91 | Coarse woven
melange natural



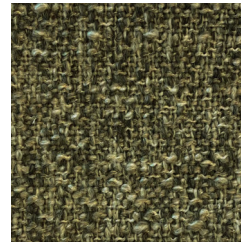
13 | Coarse woven
melange brown



176 | Coarse woven
melange dark brown

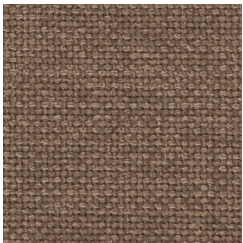


108 | Coarse woven
melange warm grey

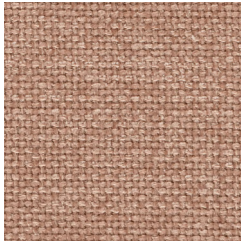


88 | Coarse woven
melange green

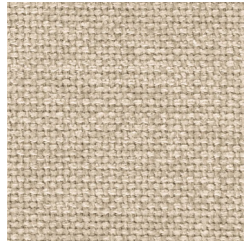
OCEAN



101 | Chenille brown



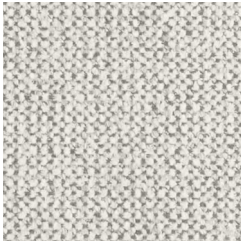
700 | Chenille old pink



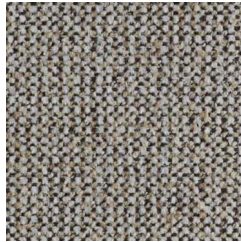
903 | Chenille sand

Fabric group 2

SAVOI



110 | Chenille
pearl melange



01 | Chenille
off white melange



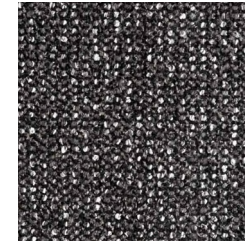
113 | Chenille
natural melange



10 | Chenille light
brown melange



181 | Chenille
grey melange



66 | Chenille
grey/black melange

NALA



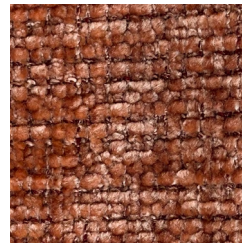
904 | Chenille
natural



906 | Chenille
taupe/pink



400 | Chenille
honey yellow



301 | Chenille
terra



100 | Chenille
warm brown

RILO



903 | Bouclé
natural



102 | Bouclé
taupe



302 | Bouclé
terra



101 | Bouclé caramel
brown



103 | Bouclé mocca
brown

VALLEY XL



102 | Woolly ecru



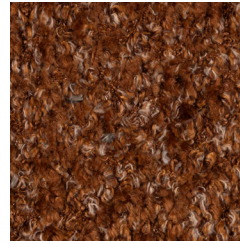
10 | Woolly dark sand



108 | Woolly brown



14 | Woolly honey
yellow



126 | Woolly rust
brown

REMY RIB



110 | Rib ecru



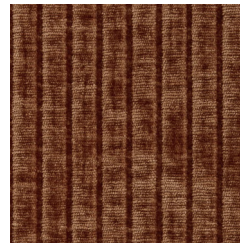
124 | Rib dark sand



17 | Rib brown



216 | Rib honey yellow

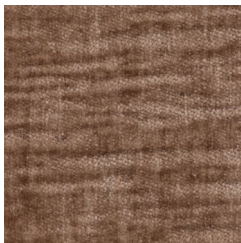


96 | Rib rust brown

GIRO



904 | Chenille natural



100 | Chenille taupe

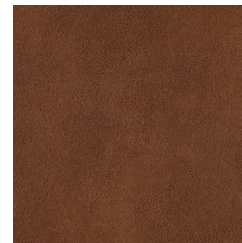


300 | Chenille peach
pink

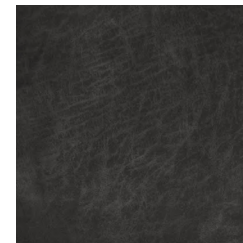


301 | Chenille terra

KOVIS



09 | Eco leather
cognac



01 | Eco leather dark
grey

Fabric group 2

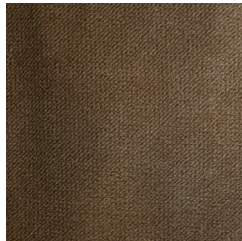
JARRA



51 | Velvet khaki



12 | Velvet taupe



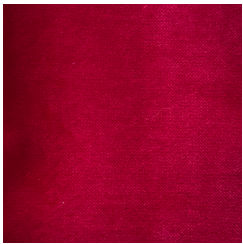
123 | Velvet brown



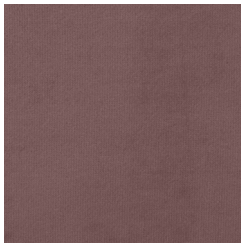
126 | Velvet rust brown



205 | Velvet chestnut
brown



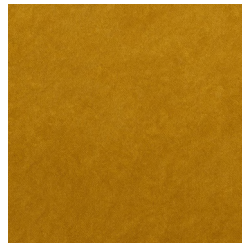
37 | Velvet red



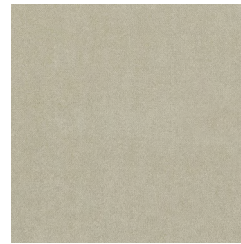
70 | Velvet lilac



14 | Velvet honey
yellow



132 | Velvet ochre



206 | Velvet pistachio



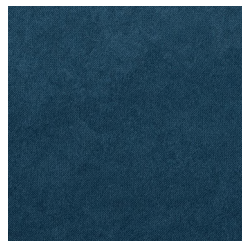
162 | Velvet green



156 | Velvet dark green



198 | Velvet steal blue



45 | Velvet blue



79 | Velvet anthracite

FABLE



14 | Chenille
natural melange



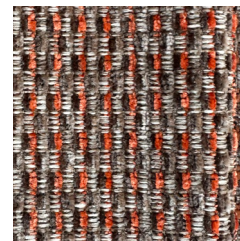
21 | Chenille light
brown melange



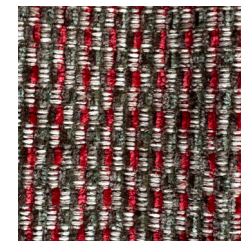
17 | Chenille
brown melange



06 | Chenille
grey melange



19 | Chenille
orange melange



18 | Chenille
red melange

BOBARE



09 | Teddy natural



10 | Teddy taupe



11 | Teddy brown



01 | Teddy anthracite



04 | Teddy lilac



12 | Teddy terra

SPLIT



10 | Rib mud



03 | Rib terrazzo



05 | Rib natural



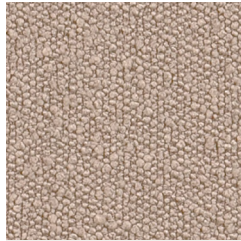
07 | Rib travertin

Fabric group 3

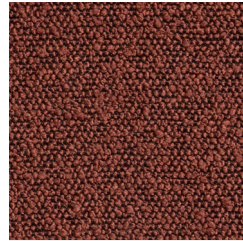
COLMAR



900 | Bouclé natural



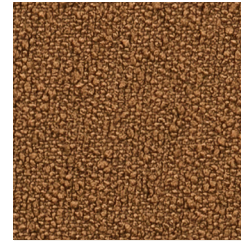
904 | Bouclé beige



300 | Bouclé chestnut brown

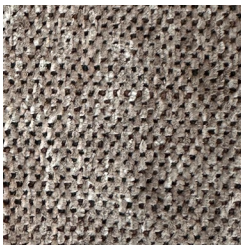


903 | Bouclé nougat



402 | Bouclé butter yellow

VASA



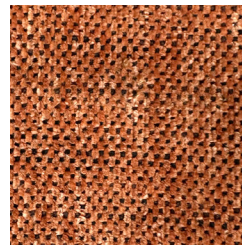
12 | Woven natural



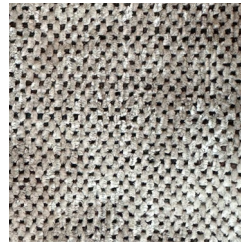
16 | Woven caramel brown



14 | Woven dark brown



17 | Woven orange



04 | Woven grey

BENSON



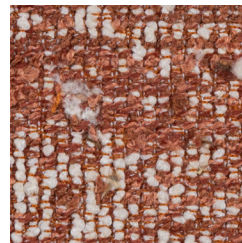
901 | Woven melange beige



102 | Woven melange light brown



100 | Woven melange brown

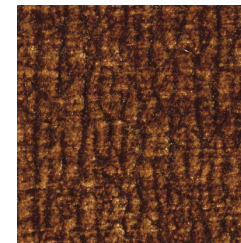


301 | Woven melange terra

DREW



17 | 3D chenille sand



10 | 3D chenille mid brown



22 | 3D chenille dark brown

Fabric group 4

Note: Fabric group 4 is currently not available in our fabric collection. As soon as this fabric group is added, we will inform you. Please check with your point of sale for the current options within our other fabric groups.

Fabric group 5

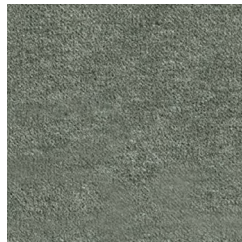
LOMA



908 | Velvet sea salt



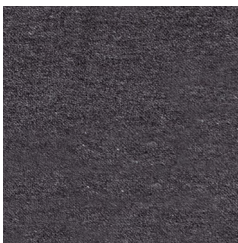
409 | Velvet cinnamon



511 | Velvet waterplant



601 | Velvet cloud



812 | Velvet cast iron

FABLE

14 | Chenille natural melange





CONFIGURATION	1-seater element	1,5-seater element	1-seater element arm left	1-seater element arm right	1,5-seater element arm left	1,5-seater element arm right
DIMENSIONS HxWxD	74x96x96 cm	74x146x96 cm	74x96x96 cm	74x96x96 cm	74x146x96 cm	74x146x96 cm
HEIGHT ARMREST	-	-	74 cm	74 cm	74 cm	74 cm
WIDTH ARMREST	-	-	30 cm	30 cm	30 cm	30 cm
SEAT DEPTH	66 cm	66 cm	66 cm	66 cm	66 cm	66 cm
SEAT HEIGHT	41 cm	41 cm	41 cm	41 cm	41 cm	41 cm
SEAT WIDTH	96 cm	146 cm	66 cm	66 cm	116 cm	116 cm
LEG HEIGHT	3 cm	3 cm	3 cm	3 cm	3 cm	3 cm
FLOOR CAP MATERIAL	Plastic	Plastic	Plastic	Plastic	Plastic	Plastic



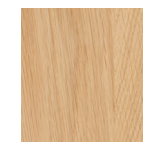
CONFIGURATION	Corner element	Chaise longue small left	Chaise longue small right	Chaise longue wide left	Chaise longue wide right	Armchair
DIMENSIONS HxWxD	74x96x96 cm	74x160x96 cm	74x160x96 cm	74x146x160 cm	74x146x160 cm	74x126x96 cm
HEIGHT ARMREST	74 cm	74 cm	74 cm	74 cm	74 cm	74 cm
WIDTH ARMREST	30 cm	30 cm	30 cm	30 cm	30 cm	30 cm
SEAT DEPTH	66 cm	66 cm	66 cm	130 cm	130 cm	66 cm
SEAT HEIGHT	41 cm	41 cm	41 cm	41 cm	41 cm	41 cm
SEAT WIDTH	66 cm	66 cm	66 cm	116 cm	116 cm	66 cm
LEG HEIGHT	3 cm	3 cm	3 cm	3 cm	3 cm	3 cm
FLOOR CAP MATERIAL	Plastic	Plastic	Plastic	Plastic	Plastic	Plastic



CONFIGURATION	Hocker	Hocker/side table	Table top
DIMENSIONS HxWxD	41x96x48 cm	41x96x48 cm	87x39x2 cm
HEIGHT ARMREST	-	-	-
WIDTH ARMREST	-	-	-
SEAT DEPTH	96 cm	96 cm	-
SEAT HEIGHT	41 cm	41 cm	-
SEAT WIDTH	48 cm	48 cm	-
LEG HEIGHT	3 cm	3 cm	-
FLOOR CAP MATERIAL	Plastic	Plastic	-

The top of the hocker is available in all colors from the Tablo series.

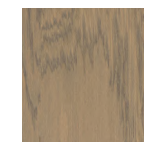
Curious about Tablo series? Scan the QR code below.



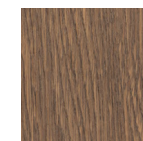
Transparent



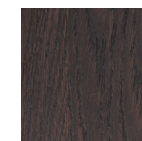
Dakargrau



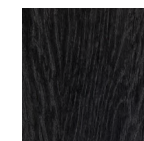
Pebble grey



Cashmere brown



Mystic brown



Blacknight

**The hocker/side table is supplied without the table top.*

**The table top must be ordered separately from the hocker/side table.*



CONFIGURATION	Arm cushion	Round cushion	Rectangular cushion	Square cushion
DIMENSIONS HxWxD	20x66x25 cm	40x40x3,5 cm	32x60x6,5 cm	60x60x4 cm
HEIGHT ARMREST	-	-	-	-
WIDTH ARMREST	-	-	-	-
SEAT DEPTH	-	-	-	-
SEAT HEIGHT	-	-	-	-
SEAT WIDTH	-	-	-	-
LEG HEIGHT	-	-	-	-
FLOOR CAP MATERIAL	-	-	-	-

Price list – fabric group 1

Fabric overview

ARTICLE CODE	FABRIC NAME	COLOR
ST-TECO-107	Teco	Warm grey
ST-TECO-402	Teco	Golden yellow
ST-TECO-506	Teco	Green
ST-TECO-801	Teco	Anthracite
ST-TECO-805	Teco	Grey
ST-TECO-807	Teco	Nougat
ST-TECO-904	Teco	Sand
ST-FERRA-14	Ferra	Bonsai
ST-FERRA-127	Ferra	Brass
ST-FERRA-206	Ferra	Frost
ST-FERRA-108	Ferra	Mountain
ST-FERRA-109	Ferra	Wheatfield
ST-RONNI-12	Ronni	Sand
ST-RONNI-13	Ronni	Taupe
ST-RONNI-83	Ronni	Grey/brown
ST-RONNI-94	Ronni	Terra
ST-RONNI-96	Ronni	Mocca brown
ST-LIORA-110	Liora	Ecrú
ST-LIORA-05	Liora	Beige
ST-LIORA-176	Liora	Brown
ST-LIORA-216	Liora	Yellow/brown
ST-LIORA-96	Liora	Rust brown
ST-ORARI-91	Orari	Natural
ST-ORARI-13	Orari	Brown
ST-ORARI-176	Orari	Dark brown
ST-ORARI-108	Orari	Warm grey
ST-ORARI-88	Orari	Green
ST-OCEAN-101	Ocean	Brown
ST-OCEAN-700	Ocean	Old pink
ST-OCEAN-903	Ocean	Sand

Element overview

ARTICLE CODE	ELEMENT	PRICE
377912-SG-01	1-seater element	€ 539,-
377913-SG-01	1,5-seater element	€ 649,-
377914-SG-01	1-seater element arm left	€ 629,-
377915-SG-01	1-seater element arm right	€ 629,-
377916-SG-01	1,5-seater element arm left	€ 909,-
377917-SG-01	1,5-seater element arm right	€ 909,-
377918-SG-01	Corner element	€ 699,-
377919-SG-01	Chaise longue element small left	€ 969,-
377920-SG-01	Chaise longue element small right	€ 969,-
377921-SG-01	Chaise longue element wide left	€ 1.389,-
377922-SG-01	Chaise longue element wide right	€ 1.389,-
377923-SG-01	Armchair	€ 849,-
377911-SG-01	Hocker	€ 249,-
377910-SG-01	Hocker/side table	€ 279,-
377924-SG-01	Arm cushion	€ 69,95
377925-SG-01	Round cushion	€ 44,95
377926-SG-01	Rectangular cushion	€ 37,95
377927-SG-01	Square cushion	€ 40,95

**The above elements in the fabrics Teco, Ferra, Ronni, Liora, Orari and Ocean correspond to the above prices*

Maintenance – fabric group 1

TECO

Our Teco woven fabric has a vintage look and immediately brings a lot of atmosphere into your home. The Teco vintage fabric is a flat, woven fabric with a very fine weave. Teco is made from 100% polyester thread and has a Martindale of 100,000, which ensures that this fabric is very durable and will not peel or tear easily. The luxurious sheen gives the Teco fabric a generous appearance and an interesting depth to the upholstered furniture.

MAINTENANCE

Remove a stain by dabbing the stain with a clean cloth soaked in water and neutral soap. Bleaching, machine drying and steaming are strongly discouraged. Teco is a flat, woven fabric, it can become rough in use and over time patina and glossy stains may appear on the most commonly used seats.

FERRA

Our rich Ferra velvet has a striking structure, which gives it a luxurious look and special shine. The soft fabric is made of 100% polyester, which makes it very easy to maintain. The Ferra textured velvet has a Martindale of 85,000 and is therefore highly resistant to scratches, discolouration and pilling. Ferra feels very soft to the touch because of the chenille yarns, and the jacquard weaving technique creates a voluminous upholstery.

MAINTENANCE

Small stains are easily removed with a damp cloth, larger stains can be dabbed with a damp cloth and a neutral furniture shampoo. When the fabric can be removed from the furniture, it can be washed inside out at 30 degrees. To keep the velvet shine it is recommended to brush the furniture weekly with a special velvet brush.

RONNI

Our soft Ronni rib fabric is composed of 88% polyester and 12% polyacrylic. This combination makes the rib fabric very easy to maintain and with a Martindale of 100,000, you need not fear scratches or pilling. The rib fabric has a reinforced backing and looks voluminous because of its woolly stripes.

MAINTENANCE

With ribbed fabric, always remove stains in the direction of the rib. Dabbing with a slightly damp, clean cloth removes most stains easily. Is the stain more persistent? Let a damp cloth absorb the stain. If necessary, brushing with a soft brush will ensure that the rib.

LIORA

Liora is a sophisticated bouclé fabric with a subtle colour blend and a firm grip. Made of 100% polyester, this elegant fabric has a Martindale of 100,000, meaning it is suitable for intensive residential use. The sturdy bouclé structure ensures that the upholstery keeps its shape and lasts a long time, even with daily use.

MAINTENANCE

The bouclé fabric is easy to maintain. In case of stains, dabbing is recommended; friction can cause light spots. Most liquids can be removed with lukewarm water. Use a gentle circular motion from the outside inwards. Easily keep the dust free with a special furniture brush of the Hoover. When the dust can be removed from the furniture, it can be washed at 30 degrees. It is recommended to wash covers inside out in.

ORARI

Our Orari is a coarsely woven fabric with a soft yet firm grip. The fabric has a subtle hue and a coarse weave pattern. Orari is composed of 94% polyester and 6% nylon. The coarsely woven fabric is suitable for very intensive use (Martindale 60,000). Orari is known as a very colourfast fabric and will not pill easily.

MAINTENANCE

The Orari coarsely woven fabric requires slightly careful maintenance. In case of stains, dabbing with a slightly damp, clean cloth is recommended. Friction can cause the nap to change.

OCEAN

Our Ocean woven fabric has a soft and luxurious look. The Ocean is made from 100% recycled polyester, making the fabric both sturdy and comfortable. The fabric has a Martindale value of 67,000. With proper care, our Ocean woven fabric can retain its soft and attractive look for years to come.

MAINTENANCE

Keep the fabric clean by vacuuming regularly. Use a vacuum with a soft brush to avoid damaging the texture. Stains? Use a water-based solution to remove the stain and wipe again briefly with a damp cloth. Do not rub, but dab! Rubbing leads to damage or light stains in the fabric. Avoid prolonged exposure to direct sunlight to maintain the best quality of the fabric.

Price list – fabric group 2

Fabric overview

ARTICLE CODE	FABRIC NAME	COLOR
ST-SAVOI-110	Savoi	Pearl melange
ST-SAVOI-01	Savoi	Off white melange
ST-SAVOI-113	Savoi	Natural melange
ST-SAVOI-10	Savoi	Light brown melange
ST-SAVOI-181	Savoi	Grey melange
ST-SAVOI-66	Savoi	Grey/black melange
ST-NALA-904	Nala	Natural
ST-NALA-906	Nala	Taupe/pink
ST-NALA-400	Nala	Honey yellow
ST-NALA-301	Nala	Terra
ST-NALA-100	Nala	Warm brown
ST-RILO-903	Rilo	Natural
ST-RILO-102	Rilo	Taupe
ST-RILO-302	Rilo	Terra
ST-RILO-101	Rilo	Caramel brown
ST-RILO-103	Rilo	Mocca brown
ST-VALLEY XL-102	Valley XL	Ecru
ST-VALLEY XL-10	Valley XL	Dark sand
ST-VALLEY XL-108	Valley XL	Brown
ST-VALLEY XL-14	Valley XL	Honey yellow
ST-VALLEY XL-126	Valley XL	Rust brown
ST-REMY RIB-110	Remy rib	Ecru
ST-REMY RIB-124	Remy rib	Dark sand
ST-REMY RIB-17	Remy rib	Brown
ST-REMY RIB-216	Remy rib	Honey yellow
ST-REMY RIB-96	Remy rib	Rust brown
ST-GIRO-904	Giro	Natural
ST-GIRO-100	Giro	Taupe
ST-GIRO-300	Giro	Peach pink
ST-GIRO-301	Giro	Terra

ARTICLE CODE	FABRIC NAME	COLOR
ST-KOVIS-09	Kovis	Cognac
ST-KOVIS-01	Kovis	Dark grey
ST-JARRA-51	Jarra	Khaki
ST-JARRA-12	Jarra	Taupe
ST-JARRA-123	Jarra	Brown
ST-JARRA-126	Jarra	Rust brown
ST-JARRA-205	Jarra	Chestnut brown
ST-JARRA-37	Jarra	Red
ST-JARRA-70	Jarra	Lilac
ST-JARRA-14	Jarra	Honey yellow
ST-JARRA-132	Jarra	Ochre
ST-JARRA-206	Jarra	Pistachio
ST-JARRA-162	Jarra	Green
ST-JARRA-156	Jarra	Dark green
ST-JARRA-198	Jarra	Steel blue
ST-JARRA-45	Jarra	Blue
ST-JARRA-79	Jarra	Anthracite
ST-FABLE-14	Fable	Natural melange
ST-FABLE-21	Fable	Light brown melange
ST-FABLE-17	Fable	Brown melange
ST-FABLE-06	Fable	Grey melange
ST-FABLE-19	Fable	Orange melange
ST-FABLE-18	Fable	Red melange
ST-BOBARE-09	Bobare	Natural
ST-BOBARE-10	Bobare	Taupe
ST-BOBARE-11	Bobare	Brown
ST-BOBARE-01	Bobare	Anthracite
ST-BOBARE-04	Bobare	Lilac
ST-BOBARE-12	Bobare	Terra

ARTICLE CODE	FABRIC NAME	COLOR
ST-SPLIT-10	Split	Mud
ST-SPLIT-03	Split	Terrazzo
ST-SPLIT-05	Split	Natural
ST-SPLIT-07	Split	Travertin

Element overview

ARTICLE CODE	ELEMENT	PRICE
377912-SG-02	1-seater element	€ 569,-
377913-SG-02	1,5-seater element	€ 669,-
377914-SG-02	1-seater element arm left	€ 669,-
377915-SG-02	1-seater element arm right	€ 669,-
377916-SG-02	1,5-seater element arm left	€ 949,-
377917-SG-02	1,5-seater element arm right	€ 949,-
377918-SG-02	Corner element	€ 749,-
377919-SG-02	Chaise longue element small left	€ 1.009,-
377920-SG-02	Chaise longue element small right	€ 1.009,-
377921-SG-02	Chaise longue element wide left	€ 1.439,-
377922-SG-02	Chaise longue element wide right	€ 1.439,-
377923-SG-02	Armchair	€ 899,-
377911-SG-02	Hocker	€ 269,-
377910-SG-02	Hocker/side table	€ 299,-
377924-SG-02	Arm cushion	€ 74,95
377925-SG-02	Round cushion	€ 49,95
377926-SG-02	Rectangular cushion	€ 44,95
377927-SG-02	Square cushion	€ 47,95

**The above elements in the fabrics Savoi, Nala, Rilo, Valley XL, Remy Rib, Giro, Kovis, Jarra, Fable, Bobare and Split correspond to the above prices*



BOBARE
09 | Teddy natural

Maintenance – fabric group 2

SAVOI

The Savoi woven fabric is composed of 100% polyester chenille, which gives the fabric a soft grip. The clearly visible weave pattern is given an extra dimension by the striking colour nuances. These hues create a cool look. As the fabric is coloured thread by thread, Savoi is known for its colourfastness. The Savoi woven fabric has a Martindale of 68,000.

MAINTENANCE

The voluminous Savoi woven fabric is very strong and can take a beating. In case of stains, dabbing with a slightly damp, clean cloth is recommended. Friction can cause loops. Keep the woven fabric clean weekly with a special furniture brush on the Hoover.

NALA

Our Nala chenille is characterised by its woven structure that provides a luxurious look and a subtle sheen. This soft fabric is made of 100% polyester. With its coarse structure, the Nala chenille has a Martindale of 100,000, meaning it has excellent resistance to loops and pilling.

MAINTENANCE

Small stains can be easily removed with a damp cloth. For stubborn stains, dabbing the fabric with a damp cloth and a neutral furniture shampoo is recommended. On the favourite seat, a shiny seat surface may appear after some time. If the fabric can be unzipped, washing at 30 degrees is possible.

RILO

Our Rilo is a soft bouclé fabric. The composition is 100% polyester, which makes the Rilo fabric both sturdy and comfortable. The fabric has a Martindale rating of 100,000, making it suitable for everyday use. With proper care, this fabric will retain its beautiful quality for years.

MAINTENANCE

Keep the fabric clean by vacuuming regularly. Use a vacuum with a soft brush to avoid damaging the structure. Stains? Use a water-based solution to gently remove the stain and then wipe again with a slightly damp cloth. Don't rub, just dab! Rubbing can cause damage or permanent stains in the fabric. Avoid prolonged exposure to direct sunlight to best preserve the quality of the fabric.

KOVIS

Our Kovis leather look has a unique appearance and is a sustainable choice due to the use of leather remnants. It consists of a bottom layer of recycled real leather and a protective polyester top layer, creating a sturdy combination fabric. The knitted microfibre provides strength, a soft feel, high colourfastness, and a Martindale of 23,000.

MAINTENANCE

Clean the fabric with a damp cloth. Stains? Use a neutral soap solution to remove the stain and briefly wipe with a damp cloth. Do not rub, but dab! Rubbing leads to light stains in the fabric. Direct sunlight always results in discolouration, always try to avoid this. Discoloured leather look will never regain its original colour.

JARRA

Our Jarra velvet fabric has a luxurious look. The fabric feels nice and has a beautiful light sheen. The Jarra velvet consists of 100% polyester and has a full and heavy quality. The material is therefore suitable for intensive use (Martindale 100,000). In addition to the stylish design, the velvet fabric remains beautiful for a long time. Our Jarra fabric will not pill quickly and is colorfast. The fabric is, to the surprise of many, a very easy fabric to maintain.

MAINTENANCE

Small stains can be removed by dabbing with an absorbent cloth, and larger stains with mild detergent and a microfiber cloth. If needed, use a hair dryer at a safe distance to speed drying. The fabric can be brushed with a velvet brush for weekly maintenance. For long-term stain protection, impregnate the furniture as soon as possible after receipt and consult a sales representative for the right product.

FABLE

The Fable fabric is a tightly woven upholstery fabric with a modern, subtly mottled look. Different yarns create a playful grid pattern that adds depth without overpowering. Its strong polyester fibres and high abrasion resistance (Martindale 50,000) make it ideal for everyday use, with minimal pilling and excellent colour retention.

MAINTENANCE

For everyday care, it is sufficient to regularly vacuum the fabric lightly using a soft brush to prevent dust and dirt from accumulating between the fibres. If a stain occurs, gently dab with a damp cloth and then clean with a mild, neutral soap. Do not rub, as this may damage the fabric. Rinse with clean water and allow the fabric to air dry to prevent water marks.

VALLEY XL

Valley XL chenille is a luxurious chenille with a soft, voluminous texture. This fabric is made of 100% polyester and has a Martindale rating of 100,000, making it perfect for intensive residential use. Thanks to the chenille yarns, Valley XL chenille feels exceptionally soft and has a warm, inviting look.

MAINTENANCE

Be careful with sharp or rough objects, as these can damage the fabric. Keep the fabric dust-free by vacuuming regularly with a furniture brush. Stains? Gently blot the stain with an absorbent cloth. Do not rub, as this can damage the fabric. Larger stains can be removed with lukewarm water and a soft cloth, working in a gentle, circular motion from the outside in.

REMY RIB

The Remy rib is a modern fabric that offers a luxurious look. Thanks to the special jacquard weaving technique, the fabric has a rich texture and a velvety appearance. Our Ruby rib fabric is made of 100% polyester thread, which provides a soft touch. With a Martindale rating of 80,000, you won't have to worry about scratches or pilling. Moreover, rib fabric has a reinforced backing and looks voluminous because of its wide stripes.

MAINTENANCE

With ribbed fabric, always remove stains along with the rib. Dabbing with a slightly damp, clean cloth will easily remove most stains. Is the stain more stubborn? Let a damp cloth absorb the stain. Any re-brushing with a soft brush will keep the rib fabric feeling wonderfully soft. If the fabric can be unzipped.

GIRO

Our Giro is a luxurious woven fabric with a comfortable, inviting feel. The rich texture and distinctive three-dimensional structure give the fabric a modern look, while the soft grip provides extra comfort. Made of 100% polyester, Giro has a Martindale rating of 100,000, which means the fabric is extremely hard-wearing – perfect for everyday use. With proper care, Giro will stay beautiful for years and retain its high-quality appearance.

MAINTENANCE

Keep the fabric clean by vacuuming regularly. To do this, use a vacuum cleaner with a soft brush to avoid damaging the structure. Stains? Use a water-based solution to gently remove the stain and then wipe with a slightly damp cloth. Don't rub, just dab! Rubbing can cause damage or permanent stains in the fabric. Avoid prolonged exposure to direct sunlight to best preserve the quality of the fabric.

BOBARE

Our Bobare teddy fabric is made of 100% polyester and has lovely, large fibres. Because of the thickness of the fabric, the Martindale cannot be tested, but the fabric is guaranteed strong enough for intensive residential use. The Bobare fabric is very colourfast and feels soft to the touch because of the long, fluffy loops.

MAINTENANCE

For weekly maintenance, use a soft furniture brush on the Hoover. For any stains, it is recommended to dab the stain with a slightly damp cloth without detergent. Friction causes the stain to bond between the fabric fibres, so rubbing is strongly discouraged.

SPLIT

Our Split rib fabric is a woven polyester fabric with a high-pile rib structure. The back of the fabric is reinforced with a tightly woven backing. Split is tested to a Martindale of 30,000 which ensures that the fabric is highly abrasion resistant.

MAINTENANCE

For stains, place a damp towel on the affected area to absorb the liquid. Replace the towel as it becomes saturated and leave the last towel until dry. Avoid rubbing, as this can push the stain deeper into the fabric. For long-term protection, the fabric can be treated with iProteqt, making it resistant to oil-, water-, and grease-based liquids. It is recommended to apply this as soon as possible after receipt for immediate protection.

Price list – fabric group 3

Fabric overview

ARTICLE CODE	FABRIC NAME	COLOR
ST-COLMAR-900	Colmar	Natural
ST-COLMAR-904	Colmar	Beige
ST-COLMAR-300	Colmar	Chestnut brown
ST-COLMAR-903	Colmar	Nougat
ST-COLMAR-402	Colmar	Butter yellow
ST-VASA-12	Vasa	Natural
ST-VASA-16	Vasa	Caramel brown
ST-VASA-14	Vasa	Dark brown
ST-VASA-17	Vasa	Orange
ST-VASA-04	Vasa	Grey
ST-BENSON-901	Benson	Beige
ST-BENSON-102	Benson	Light brown
ST-BENSON-100	Benson	Brown
ST-BENSON-301	Benson	Terra
ST-DREW-17	Drew	Sand
ST-DREW-10	Drew	Mid brown
ST-DREW-22	Drew	Dark brown

Element overview

ARTICLE CODE	ELEMENT	PRICE
377912-SG-03	1-seater element	€ 599,-
377913-SG-03	1,5-seater element	€ 699,-
377914-SG-03	1-seater element arm left	€ 699,-
377915-SG-03	1-seater element arm right	€ 699,-
377916-SG-03	1,5-seater element arm left	€ 999,-
377917-SG-03	1,5-seater element arm right	€ 999,-
377918-SG-03	Corner element	€ 779,-
377919-SG-03	Chaise longue element small left	€ 1.049,-
377920-SG-03	Chaise longue element small right	€ 1.049,-
377921-SG-03	Chaise longue element wide left	€ 1.499,-
377922-SG-03	Chaise longue element wide right	€ 1.499,-
377923-SG-03	Armchair	€ 949,-
377911-SG-03	Hocker	€ 279,-
377910-SG-03	Hocker/side table	€ 309,-
377924-SG-03	Arm cushion	€ 84,95
377925-SG-03	Round cushion	€ 59,95
377926-SG-03	Rectangular cushion	€ 49,95
377927-SG-03	Square cushion	€ 54,95

**The above elements in the fabrics Colmar, Vasa, Benson and Drew correspond to the above prices*

Maintenance – fabric group 3

COLMAR

The material of the Colmar bouclé fabric responds to the latest trend: soft materials. The fabric is comfortable and has an elegant texture. Our Colmar bouclé has a Martindale of 100,000, which means the fabric is suitable for intensive use. The dense weaving technique ensures the strength of the fabric, this makes the bouclé not likely to wear or tear. Also, each color has a high color fastness, but it is recommended to avoid direct sunlight to avoid color shades.

MAINTENANCE

In case of any stains, immediately pat dry with a clean cloth or tissue. Do not rub! Most liquids can be removed with lukewarm water. Use a gentle circular motion from the outside inwards. If the fabric can be removed from the furniture, washing at 30 degrees or dry cleaning is possible. For years of stain protection, the fabric can be impregnated. Impregnate the seating furniture as soon as possible after receipt to ensure instant protection. Get advice from a sales associate.

BENSON

Our Benson is a woven fabric with a melange effect. Its composition is 100% polyester, which makes the Benson fabric both sturdy and comfortable. The fabric has a Martindale rating of 70,000, making it suitable for everyday use. With proper care, the Benson fabric will remain good quality for years.

MAINTENANCE

Keep the fabric clean by vacuuming regularly with a soft brush to avoid damaging the structure. Stains? Use a water-based solution to gently remove the stain and then wipe again with a slightly damp cloth. Don't rub, just dab! Rubbing can cause damage or permanent stains in the fabric. Avoid prolonged exposure to direct sunlight to best preserve the quality of the fabric.

VASA

Our Vasa is a woven fabric with a subtle melange effect. The composition is 100% polyester, which makes the fabric both sturdy and comfortable. The fabric has a Martindale rating of 30,000. With proper care, our Vasa fabric will remain of beautiful quality for years.

MAINTENANCE

Keep the fabric clean by vacuuming regularly. Use a vacuum with a soft brush to avoid damaging the structure. Stains? Use a water-based solution to gently remove the stain and then wipe again with a slightly damp cloth. Don't rub, just dab! Rubbing can cause damage or permanent stains in the fabric. Avoid prolonged exposure to direct sunlight to best preserve the quality of the fabric.

DREW

Our Drew textured fabric has a soft grip and a comfortable feel. Made of 100% polyester, the fabric stands out for its unusual 3D pattern with an irregular, wavy print, which creates a telling depth to the furniture piece. In addition, the fabric features a luxurious matte sheen which provides a high-quality look. The fabric has a Martindale of 100,000.

MAINTENANCE

The compactly woven fabric is easy to clean with a vacuum and furniture brush. Stains should be blotted immediately with a clean cloth—never rubbed—and most liquids can be removed with lukewarm water using a gentle circular motion from the outside in. For long-term protection, the fabric can be treated with iProteqt, making it resistant to oil-, water-, and grease-based liquids; this is recommended as soon as possible after receipt.

JARRA

123 | Velvet brown



Price list – fabric group 4

Note: Fabric group 4 is currently not available in our fabric collection. As soon as this fabric group is added, we will inform you. Please check with your point of sale for the current options within our other fabric groups.

Price list – fabric group 5

Fabric overview

ARTICLE CODE	FABRIC NAME	COLOR
ST-LOMA-908	Loma	Sea salt
ST-LOMA-409	Loma	Cinnamon
ST-LOMA-511	Loma	Waterplant
ST-LOMA-601	Loma	Cloud
ST-LOMA-812	Loma	Cast iron

Maintenance – fabric group 5

LOMA

Our Loma velvet fabric has a luxurious look. The fabric feels nice and has a beautiful, slightly matte sheen. The Loma washed velvet consists of 80% polyester and 20% cotton, and has a full and heavy quality. The material is therefore suitable for intensive use (Martindale 100,000). The velvet fabric will not pill quickly but is sensitive to light, discoloration of exposed fabric can occur over time. The fabric is, to the surprise of many, a very easy fabric to maintain.

MAINTENANCE

Small stains can be removed by dabbing with an absorbent cloth, while larger stains can be cleaned with mild detergent and a microfiber cloth. Use a hair dryer to speed drying if needed, keeping a safe distance to avoid damage. The fabric can then be brushed with a velvet brush for regular maintenance. For long-term stain protection, impregnate the furniture as soon as possible after receipt and consult a sales associate for the right product.

Element overview

ARTICLE CODE	ELEMENT	PRICE
377912-SG-05	1-seater element	€ 649,-
377913-SG-05	1,5-seater element	€ 749,-
377914-SG-05	1-seater element arm left	€ 759,-
377915-SG-05	1-seater element arm right	€ 759,-
377916-SG-05	1,5-seater element arm left	€ 1.059,-
377917-SG-05	1,5-seater element arm right	€ 1.059,-
377918-SG-05	Corner element	€ 869,-
377919-SG-05	Chaise longue element small left	€ 1.129,-
377920-SG-05	Chaise longue element small right	€ 1.129,-
377921-SG-05	Chaise longue element wide left	€ 1.599,-
377922-SG-05	Chaise longue element wide right	€ 1.599,-
377923-SG-05	Armchair	€ 1.049,-
377911-SG-05	Hocker	€ 299,-
377910-SG-05	Hocker/side table	€ 329,-
377924-SG-05	Arm cushion	€ 99,95
377925-SG-05	Round cushion	€ 74,95
377926-SG-05	Rectangular cushion	€ 64,95
377927-SG-05	Square cushion	€ 69,95

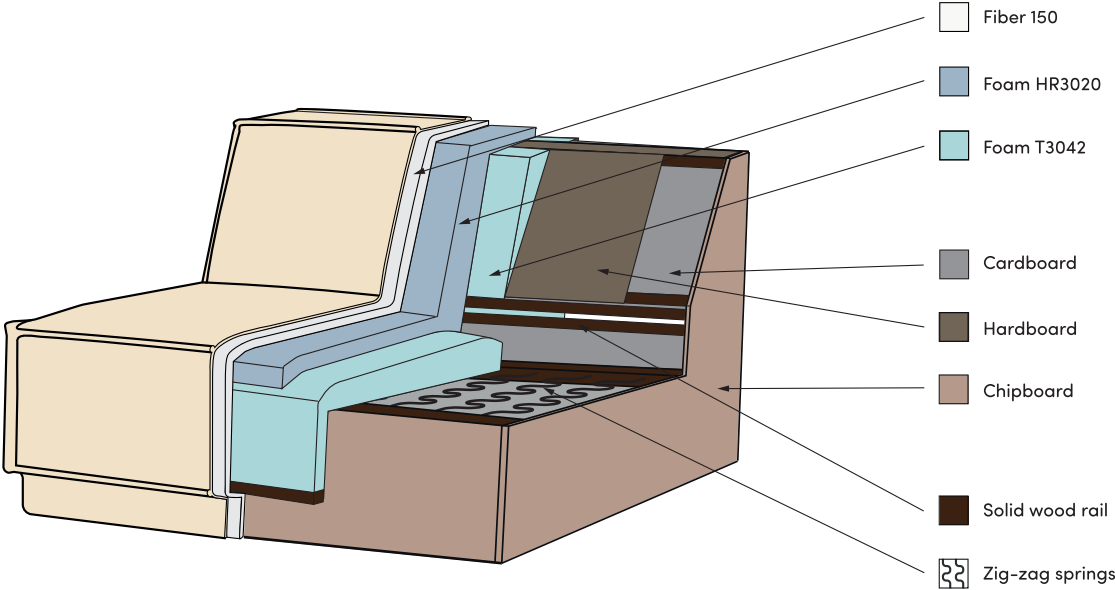
**The above elements in Loma fabric correspond to the above prices*

Price list – table tops hocker/side table

Table tops and color overview

ARTICLE CODE	ELEMENT	PRICE
377905-TP	Table top hocker/side table transparent	€ 179,-
377905-DG	Table top hocker/side table dakargrau	€ 179,-
377905-PG	Table top hocker/side table pebble grey	€ 179,-
377905-CB	Table top hocker/side table cashmere brown	€ 179,-
377905-MB	Table top hocker/side table mystic brown	€ 179,-
377905-BN	Table top hocker/side table blacknight	€ 179,-

Cross-section Manu element sofa





Discover where to
shop Manu – just
scan the QR code!



Manu
*always
fits*



Share your style with us! Tag or mention @madebywood
and use #openupyourstyle to get featured.

